

Preparing to Run ChaRT

ChaRT Threads

[S-Lang Syntax]

Table of Contents

- **Get Started**
- **Determine the Off-axis Angle**
- **Spectral Specification of the PSF**
 - ◆ Energy & Density
 - ◆ Spectrum & Exposure Time
- **Scripting It**
- **Summary**
- **History**
- **Images**
 - ◆ Figure 1: Reading the off-axis angle
 - ◆ Figure 2: A plot of the ChaRT spectrum

Preparing to Run ChaRT

ChaRT Threads

[S-Lang Syntax]

Overview

Last Update: 17 Feb 2010 - reviewed for CIAO 4.2: minor updates to screen output to match Sherpa 4.2; added Scripting It section

Synopsis:

This thread shows how to find the parameter values needed to run ChaRT. These values consist of the coordinates and spectral specifications (whether "energies with density" or "spectrum with exposure time") for the PSF. Note that the "spectrum with exposure time" works well for ACIS; for HRC, the "energies with density" option is recommended.

Proceed to the [HTML](#) or hardcopy (PDF: [A4](#) | [letter](#)) version of the thread.

Get Started

Sample ObsID used: 942 (ACIS-S, NGC 4244)

File types needed: evt2

If you use a [spectrum file](#) as the spectral specification for your PSF, you will need to use the module, which is part of the [CIAO Scripts distribution](#). The CIAO scripts package should be dated April 17 or newer:

```
unix% cat $ASCDS_CONTRIB/VERSION.CIAO_scripts
17 Apr 2009
```

Please check that you are using the most recent version before continuing. If you do not have the scripts installed or need to update to a newer version, refer to the [Scripts page](#).

Determine the Off-axis Angle

It is necessary to find the location of the source (or position) for which you would like to generate a PSF. To find the coordinates of a source - that is, the offsets from the optical axis - display the event file in ds9:

```
unix% ds9 acisf00942N003_evt2.fits
```

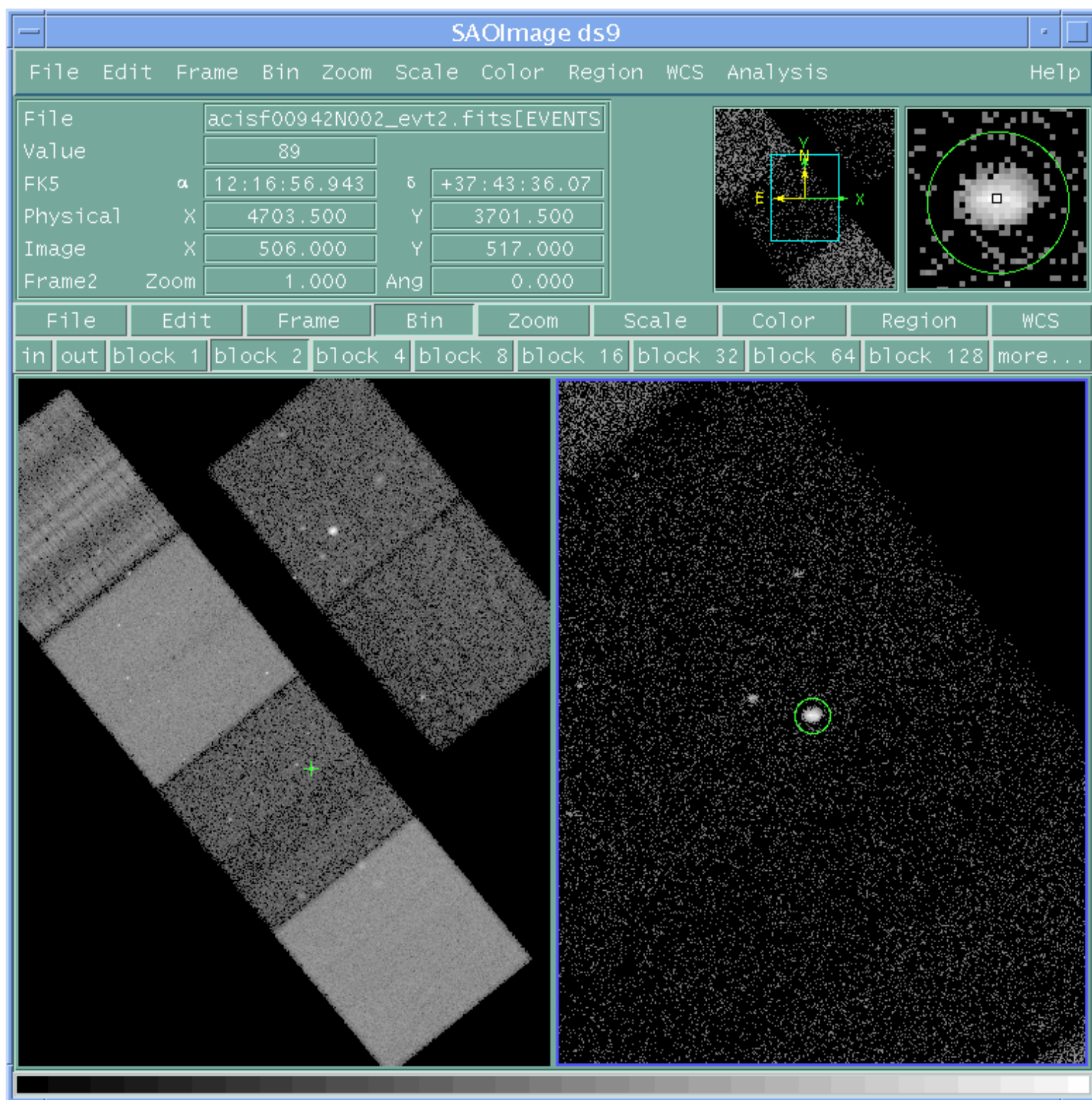


Figure 1: Reading the off-axis angle

The entire field is shown in the left frame of ds9 with the source marked by a cross. In the right frame, the image is zoomed and the desired source is circled.

Preparing to Run ChaRT - ChaRT 1.0 (S-Lang)

Simply read the sky (physical) coordinates from ds9 as you pass the cursor over the image.

```
(x,y) = (4704,3700)
```

Since ChaRT requires the position to be in terms of `theta` and `phi`, `dmcoords` is used to convert the values:

```
unix% dmcoords acisf00942N003_evt2.fits asol=pcadf075214790N003_asol1.fits opt=sky x=4704 y=3700
unix% pget dmcoords theta phi
5.948632053025285
197.7438897007665
```

The position is therefore:

```
(theta,phi) = (5.949,197.74)
```

The values are given in the necessary units - `theta` in [arcmin] and `phi` in [deg]. This step could also be done with `dmcoords` in interactive mode:

```
unix% dmcoords acisf00942N003_evt2.fits asol=pcadf075214790N003_asol1.fits
dmcoords>: sky 4704 3700
(RA,Dec):      12:16:57.136      +37:43:35.94
(RA,Dec):      184.23807        37.72665 deg
THETA, PHI      5.949'        197.74 deg
(Logical):      4704.00         3700.00
SKY (X, Y):      4704.00         3700.00
DETX, DETY      3405.57         3875.41
CHIP ACIS-S2     573.49          753.83
TDET            3448.49         2455.83
dmcoords>: q
```

When running `dmcoords` interactively, a small value of `theta` is returned in [arcsec] and you must convert it to [arcmin]. For more information on [coordinate definitions](#), read the [CIAO thread on using ds9](#).

Caveat: if your event file has been reprojected (see [reproject_events](#)) `dmcoords` will not calculate `theta` and `phi` correctly; see the [CIAO bugs page](#) for more information. To avoid this bug, either use the original `level=2` event file in this step or follow the workaround given on the bug page.

Spectral Specification of the PSF

The spectral information for the PSF may be provided as either a list of monochromatic energies and a ray density or a source spectrum file and an exposure time.

Energy & Density

Energy: a list of up to ten monochromatic energies between 0.2 and 10 keV. The values must be given in [keV] as well.

Density: a single value indicating the density of rays that will be generated at the entrance aperture. The allowed range is 0.001 to 10 rays/mm². The number of rays that arrive at the focal plane is determined by the HRMA effective area at the input energies.

This option is useful when assembling a composite spectrum from several mono-energetic simulations, and it is the preferred method for the HRC, because the construction of a spectral file for the HRC is not straightforward.

Using the "energy & density" option

1. The purpose of making the PSF

- A. To make a PSF with approximately the same number of counts as the source under investigation. For example, you may want to subtract the PSF at the source position in order to look for extended, low brightness emission around the source.
- B. To define the PSF with a much higher S/N than the data.

2. Select an energy

HRC: for most sources, a monochromatic PSF will suffice, with an energy input of 1 keV. For some sources, e.g. super soft sources, another monoenergy - maybe 0.2 keV - would be a better choice, or perhaps the simulation should include both 0.2 and 1 keV.

ACIS: the user will have to decide if a single energy PSF is sufficient, and if not, the known or suspected source spectrum will dictate the choice of energies.

3. Determine the necessary density

Now we need to estimate density to input. Looking at the [Effective Area \(EA\) curve for HRC-I in the POG](#), we can estimate the EA to be 200 cm² at 1 keV. Since the ChaRT input requires units of rays/mm², we can calculate a source density which is approximately

$$(\# \text{ counts in your source}) / (20000 \text{ mm}^2) .$$

If you want to create a PSF with a much higher S/N, you can increase the number of rays by some factor like 10 or 100 (so long as you don't exceed the maximum of 10 rays/mm²).

Spectrum & Exposure Time

Exposure Time: the desired exposure time for the simulation. It must be given in [ks] and be within the range of 0 to 200 ks.

The value is usually chosen to match the exposure time of the observation, which is stored in the EXPOSURE header keyword of the event file:

```
unix% dmkeypar acisf00942N003_evt2.fits exposure echo+
49215.214915137
```

The exposure time is returned in [s], so this observation is 49 ks long.

Spectrum: a file containing the definition of the source spectrum at the entrance aperture of the HRMA for which you would like a PSF to be simulated.

A common user error has proven to be using a file with incorrect units, which often results in ChaRT producing a PSF model that appears much too bright. The file *must* be energy [keV] vs flux [photons/cm²/s]. Currently, ChaRT will not complain if it appears that the file has incorrect units, so it is up to the user to check that the file is accurate.

For directions on creating a spectrum for your source, see the [CIAO Imaging Spectroscopy threads](#). Then fit the data as described in the [Fitting PHA Spectra Sherpa thread](#).

For this example, the spectrum is fit with a [one-dimensional power law](#) multiplied by a [photoelectric absorption model](#).

Preparing to Run ChaRT - ChaRT 1.0 (S-Lang)

```
unix% sherpa
-----
Welcome to Sherpa: CXC's Modeling and Fitting Package
-----
CIAO 4.2 Monday, November 30, 2009

sherpa> load pha("3c273.pi");
sherpa> subtract;
sherpa> notice(0.4, 6.0);
sherpa> set_source(xsphabs.abs1 * powlaw1d.p1);
sherpa> abs1.nh = 0.07;
sherpa> freeze(abs1);
sherpa> guess(p1);
sherpa> fit;
Dataset                = 1
Method                  = levmar
Statistic                = chi2gehrels
Initial fit statistic   = 71.8133
Final fit statistic     = 23.6368 at function evaluation 16
Data points             = 42
Degrees of freedom      = 40
Probability [Q-value]   = 0.981499
Reduced statistic       = 0.590919
Change in statistic     = 48.1766
  p1.gamma              2.13334
  p1.ampl               0.000220644
```

The script must be loaded into Sherpa before it can be run (this step is only necessary once per session):

```
sherpa> require("sherpa_chart");
```

If you would like to plot your spectrum, use the function `plot_chart_spectrum()`; the optional `elow` and `ehigh` values specify the minimum and maximum energies to include in the plot:

```
sherpa> plot_chart_spectrum();
sherpa> plot_chart_spectrum(elow=1.0, ehight=8.0);
```

Figure 2 shows the resulting plot.

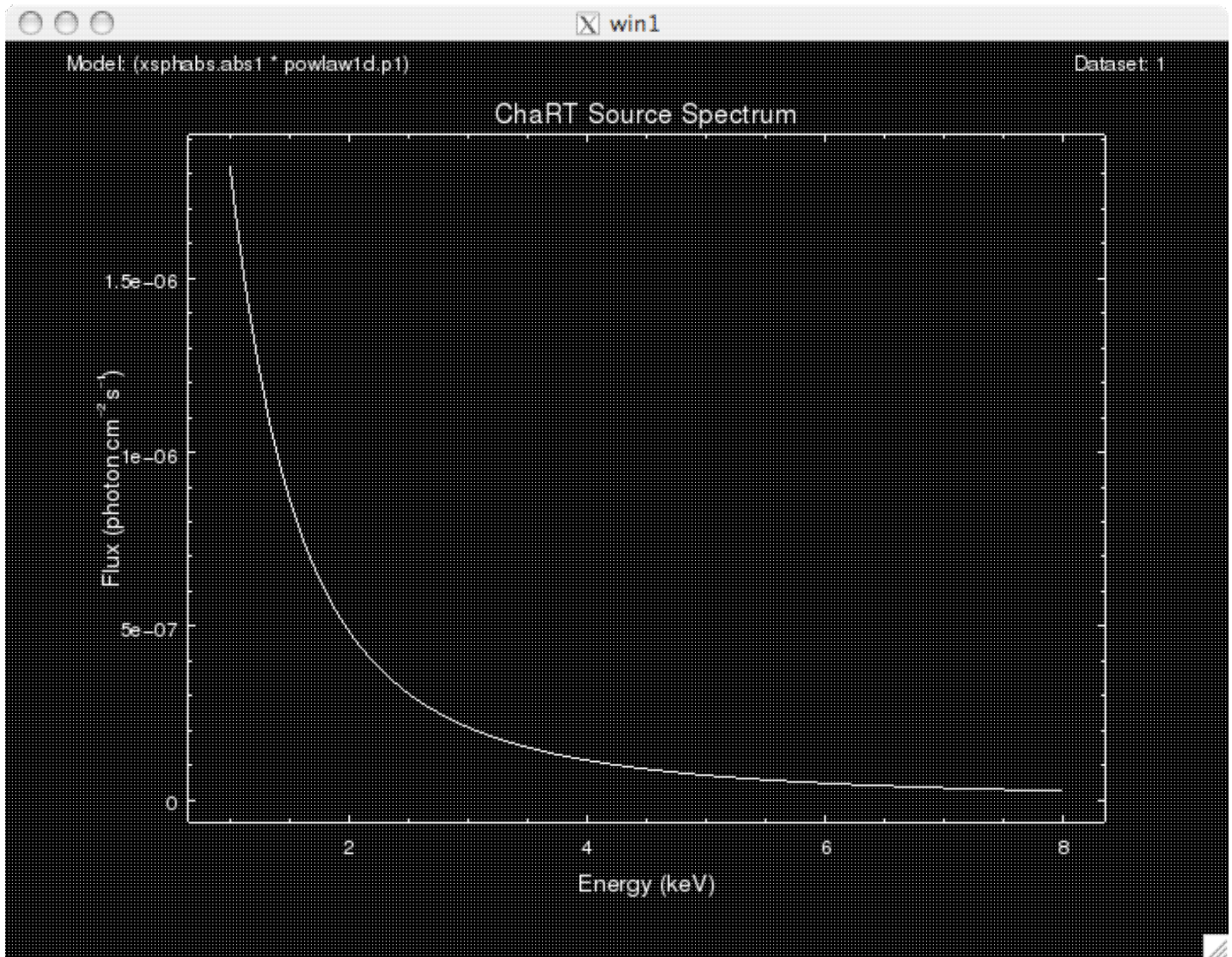


Figure 2: A plot of the ChaRT spectrum

The source model is plotted in units of photons per cm^2 per s against energy (keV), as required by ChaRT.

The `save_chart_spectrum()` command is used to create the output file. In this example, we use the optional `elow` and `ehigh` arguments to restrict the output to the 1-8 keV range. If the bounds are omitted, the full energy range as determined by *Sherpa* is used.

```
sherpa> save_chart_spectrum("source_flux_chart.dat"; elow=1.0, ehight=8.0);
Created: source_flux_chart.dat
sherpa> quit
```

The output produced by `save_chart_spectrum` is an ASCII file that contains two columns. The first column gives the center of the energy bin in [keV]. The second column is the flux in [$\text{photons}/\text{cm}^2/\text{s}$].

```
unix% more source_flux_chart.dat
1.005    1.82537e-06
```

Figure 2: A plot of the ChaRT spectrum

```
1.015 1.7956e-06
1.025 1.76639e-06
1.035 1.73775e-06
1.045 1.70966e-06
1.055 1.68211e-06
1.065 1.6551e-06
1.075 1.62822e-06
1.085 1.60202e-06
1.095 1.57659e-06
...
7.935 2.65464e-08
7.945 2.64753e-08
7.955 2.64045e-08
7.965 2.63339e-08
7.975 2.62637e-08
7.985 2.61937e-08
7.995 2.6124e-08
```

Scripting It

The file `fit.sl` is an S-Lang script which performs the primary commands used above; it can be executed by typing `evalfile("fit.sl")` on the Sherpa command line.

Summary

Since all the necessary information has been obtained, you are ready to [run ChaRT](#).

History

- 14 Dec 2004 updated for CIAO 3.2: location of `chart_spectrum.sl`
- 16 Feb 2005 reviewed for CIAO 3.3: no changes
- 18 Aug 2008 updated for CIAO 4.0: version N003 event file, minor changes to screen output; the `chart_spectrum.sl` script must be run in CIAO 3.4 (a new version for CIAO 4 will be released as soon as it is available); updated to have inline image
- 08 Oct 2008 when using the [Spectrum & Exposure Time](#) method, exposure time may be up to 200 ks
- 02 Mar 2009 the `chart_spectrum` script has been updated for CIAO 4.1 - Python and S-Lang versions are available (revision "CIAO 4.1 - 1.0"); information [Spectrum & Exposure Time section](#) expanded
- 15 Apr 2009 The `chart_spectrum` script has been renamed to the `sherpa_chart` module; the `write_chart_spectrum()` has been renamed `save_chart_spectrum()`; the old version of the script and routine have been retained but are now deprecated; ahelp files are now available for [save chart spectrum](#), [plot chart spectrum](#), and

Preparing to Run ChaRT - ChaRT 1.0 (S-Lang)

get_chart_spectrum.

17 Feb 2010 reviewed for CIAO 4.2: minor updates to screen output to match Sherpa 4.2; added Scripting It section

URL: <http://cxc.harvard.edu/chart/threads/prep/index.sl.html>

Last modified: 17 Feb 2010

