

# **CDO CUC Report: Overview**

- Updates to the CfP Based on CUC Input
- TOO Panel Breakdown
- Plans for Cycle 25 Peer Review
- Cycle 25 Submission Statistics
- Initial Demand for JWST/Chandra Joint Program

# Updates to the Cycle 25 CfP Based on CUC Input

- **Changes for Multicycle Proposals**

- Multicycle proposals are no longer limited to *time-constrained* programs.
- Any multicycle proposal requesting at least 400 ks in any cycle or a total exposure of 1 Ms or more must be submitted as a Large or Very Large Proposal.
- All multicycle proposals will require either a Monitor Constraint that spans the multi-cycle duration or a Window Constraint for each cycle with assigned exposure times.

# Updates to the Cycle 25 CfP Based on CUC Input

- **Reference list will no longer count against the total page limit**
  - References should now appear on a separate page at the end of the scientific justification and technical feasibility.
  - The single reference page does not count against the page limits and must only contain references (no figures, no tables, no charts, and no narrative text of any kind).

# Updates to the Cycle 25 CfP Based on CUC Input

- **TOO Proposals will now be reviewed in TOO Topical Panels**
  - In previous cycles, TOO proposals were reviewed by subject-specific Topical Panels along with non-TOO proposals.
  - Starting in Cycle 25 TOOs will be reviewed in panels considering only TOO proposals and including panelists with diverse scientific backgrounds.
  - TOO proposers were advised in the What's New section to bear in mind that some panelists from outside the area of expertise will be reviewing proposals.

# TOO Panel Breakdown

- **TOO Behavior in the Past Three Cycles**

- Based on the past three cycles, the largest impact of adding the two new TOO topical panels will be in the Supernova/NS and Binaries Panels (Panels 03, 04, 05, and 06).
  - Supernova/NS and Binaries panels will see an average reduction of about 30%.
  - AGN will see a slight reduction, but less than 5%.
- TOO panels subject matter will be dominated by Supernova/NS and Binary subjects. Followed by AGN.

# TOO Panel Breakdown

## ● TOO Behavior in the Past Three Cycles

Cycle 24:

8 *ACTIVE GALAXIES AND QUASARS*  
25 **BH AND NS BINARIES**  
2 GALACTIC DIFFUSE EMISSION AND SURVEYS  
1 GRAVITATIONAL WAVE EVENT  
1 NORMAL GALAXIES: X-RAY POPULATIONS  
20 **SN, SNR AND ISOLATED NS**  
2 STARS AND WD  
3 WD BINARIES AND CV  
-----  
62 Total

Cycle 23:

12 *ACTIVE GALAXIES AND QUASARS*  
27 **BH AND NS BINARIES**  
1 GALACTIC DIFFUSE EMISSION AND SURVEYS  
3 GRAVITATIONAL WAVE EVENT  
1 NORMAL GALAXIES: X-RAY POPULATIONS  
23 **SN, SNR AND ISOLATED NS**  
2 STARS AND WD  
2 WD BINARIES AND CV  
-----  
71 Total

Cycle 22:

12 *ACTIVE GALAXIES AND QUASARS*  
24 **BH AND NS BINARIES**  
1 EXTRAGALACTIC DIFFUSE EMISSION AND  
SURVEYS  
1 GALACTIC DIFFUSE EMISSION AND SURVEYS  
2 GRAVITATIONAL WAVE EVENT  
1 NORMAL GALAXIES: DIFFUSE EMISSION  
21 **SN, SNR AND ISOLATED NS**  
3 STARS AND WD  
3 WD BINARIES AND CV  
-----  
68 Total

# TOO Panel Breakdown

- **TOO Behavior in Cycle 25**

```
22 BH AND NS BINARIES
18 SN, SNR AND ISOLATED NS
10 ACTIVE GALAXIES AND QUASARS
  5 GRAVITATIONAL WAVE EVENT
  3 WD BINARIES AND CV
  2 GALACTIC DIFFUSE EMISSION AND SURVEYS
-----
60 Total
```

- **TOO Panel Organized by Dan Schwartz (with incredible gratitude!)**
- **TOO Panel Deliberations and Details Forthcoming**

# Plans for Cycle 25 Peer Review

- Cycle 25 Timeline:
  - 15 December 2022 - Call for Proposal and POG Release
  - 15 March 2023 - Deadline for Proposals
  - 15 May 2023 - Proposals Released to Reviewers
  - 20-29 June 2023 - Peer Review Meetings (Topical and Big Project Panels)



# Plans for Cycle 25 Peer Review

- Logistics:
  - Fully-remote (engaging in Zoom meetings, Slack workspace, and our regular review software).
  - Topical Panels (13 Topical Panels):
    - Meeting in 5-hour blocks on 20, 21, 23, 24 of June.
    - Final Rankings and Reports due 24 June.
  - Big Project Panel:
    - Business and Triage meeting 24 June (26 June; as a back-up)
    - Reading Period 26 and 27 June.
    - Meeting in 5-hour blocks on 28 and 29 of June.

# Update on Cycle 25 Submission Statistics

- **Statistics**

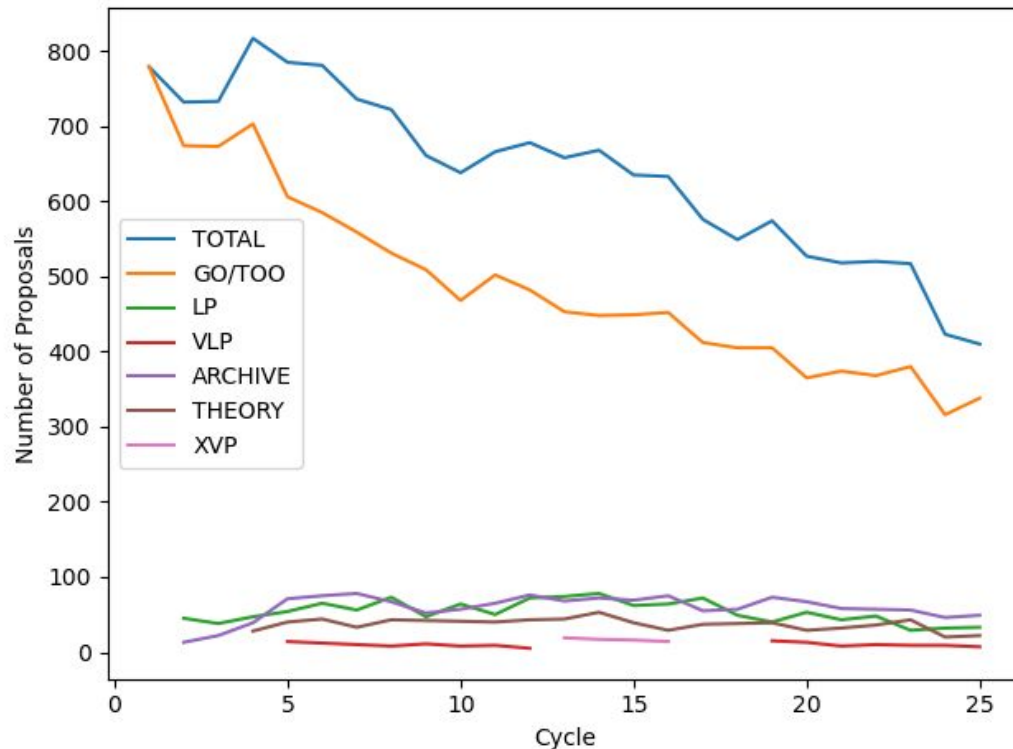
- Slight decline in number of proposals but uptick in oversubscription by time.
- LP and VLP pressure remained steady.

	Cycle 24	Cycle 25
Total	423	410
GO (w/ TOO)	254 (316)	241 (338)
LP	29 (33)	31 (34)
VLP	9	7
Archive	46	49
Theory	20	22

# Update on Cycle 25 Submission Statistics

- **Statistics**

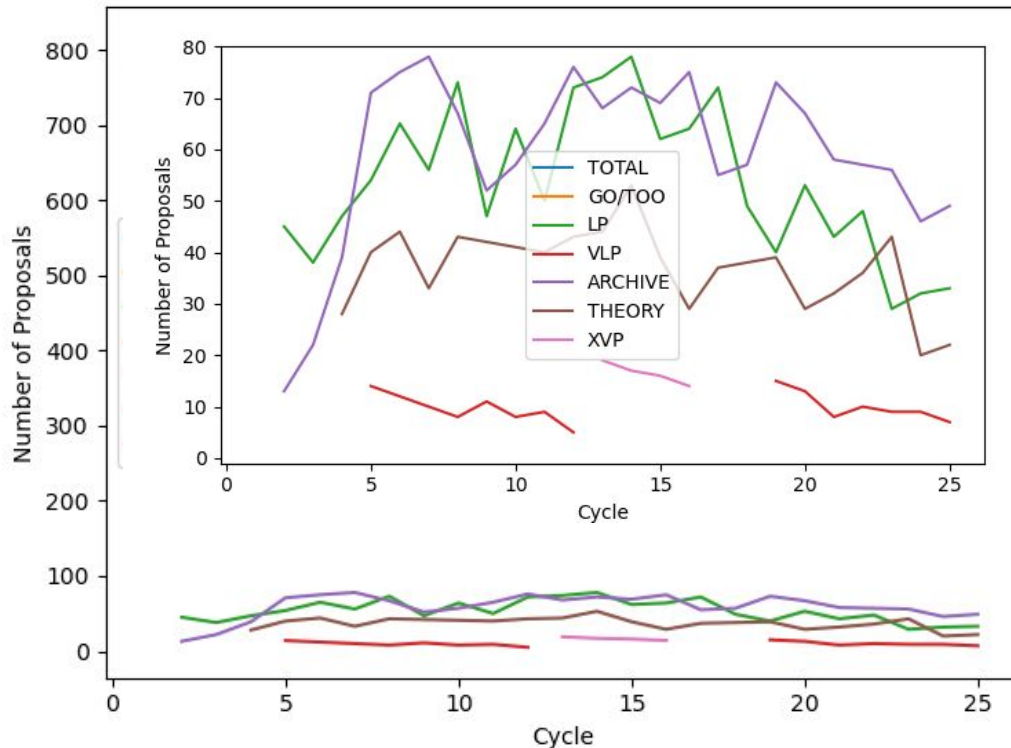
- Slight decline in number of proposals but uptick in oversubscription by time.
- LP and VLP pressure remained steady.



# Update on Cycle 25 Submission Statistics

- **Statistics**

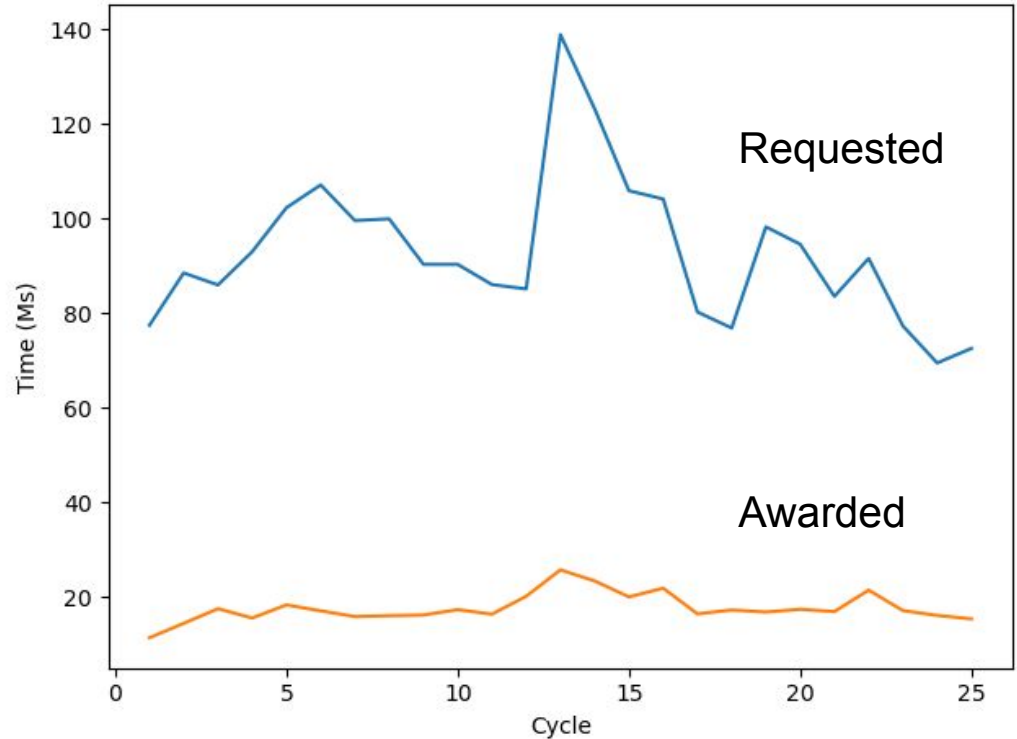
- Slight decline in number of proposals but uptick in oversubscription by time.
- LP and VLP pressure remained steady.



# Update on Cycle 25 Submission Statistics

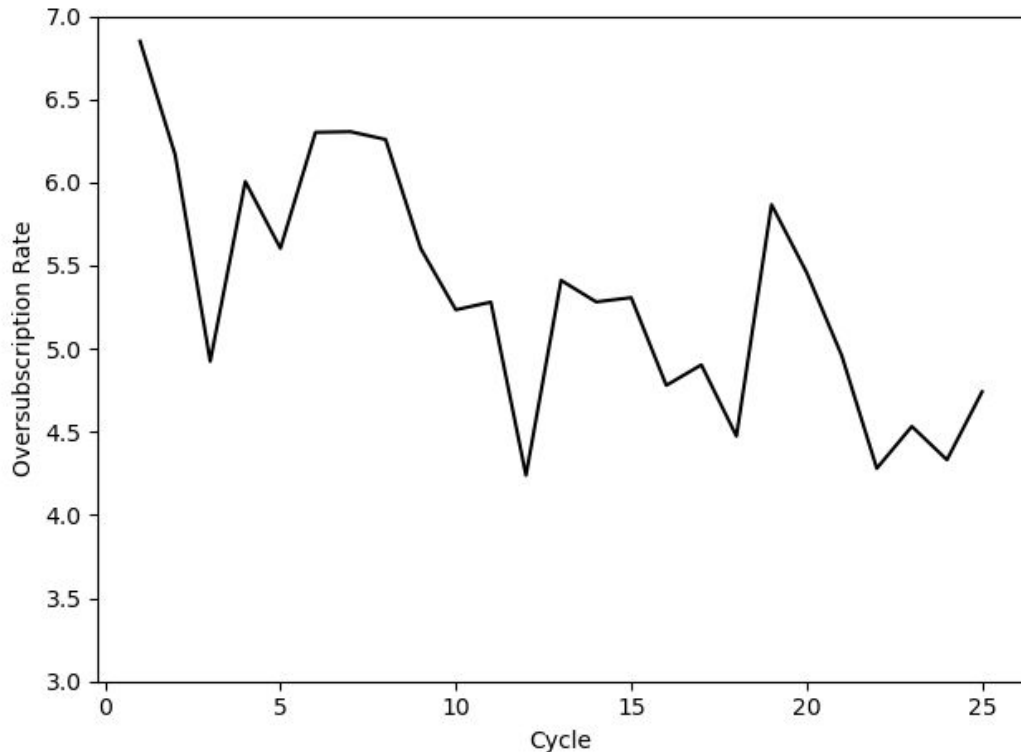
- **Statistics**

- Slight decline in number of proposals but uptick in oversubscription by time.
- LP and VLP pressure remained steady.



# Update on Cycle 25 Submission Statistics

- **Oversubscription by Time**
  - **Overall: 4.87**  
(Time Available: 15 Ms,  
Time Requested: 73 Ms)



# Update on Cycle 25 Submission Statistics

- **Oversubscription of Funds for Theory and Archive Programs**
  - **Archive:** 4.1
    - Request: \$4.30 million
    - Budget: \$1.05 million
  - **Theory:** 3.5
    - Request: \$2.1 million
    - Budget: \$0.6 million

# Cycle 25: Big Projects and Resources

- Continue with ~4 Ms to Big Project Panel and remaining time to topical panels.
  - Note that additional time may become available if not all Joint Time allocated (600 ks from HST in Cycle 25). Historically this allocated to the BPP due to high oversubscription ratio.
- Keep requirement for at least 1 Ms awarded to Very Large Project(s).
- High Ecliptic Latitude (HEL) time will continue to be limited.
- Joint Partner Observatories will have an allocation of HEL time and Resource Costs (no evidence for exceeding these limits in Cycle 25).



# Cycle 25: JWST Joint Program

- New Joint Time agreement with JWST
  - 150 hours of JWST observing time are available in Cycle 25.
  - 600 ksec of *Chandra* observing time was available for the JWST Call for Proposals.
  - No more than one JWST Target of Opportunity (TOO) observation with a turn-around time shorter than three weeks.
- Three JWST joint programs received from JWST's CfP requesting 241 ks.
- Three JWST joint request received in CXC Cycle 25 CfP requesting 51.4 hrs.