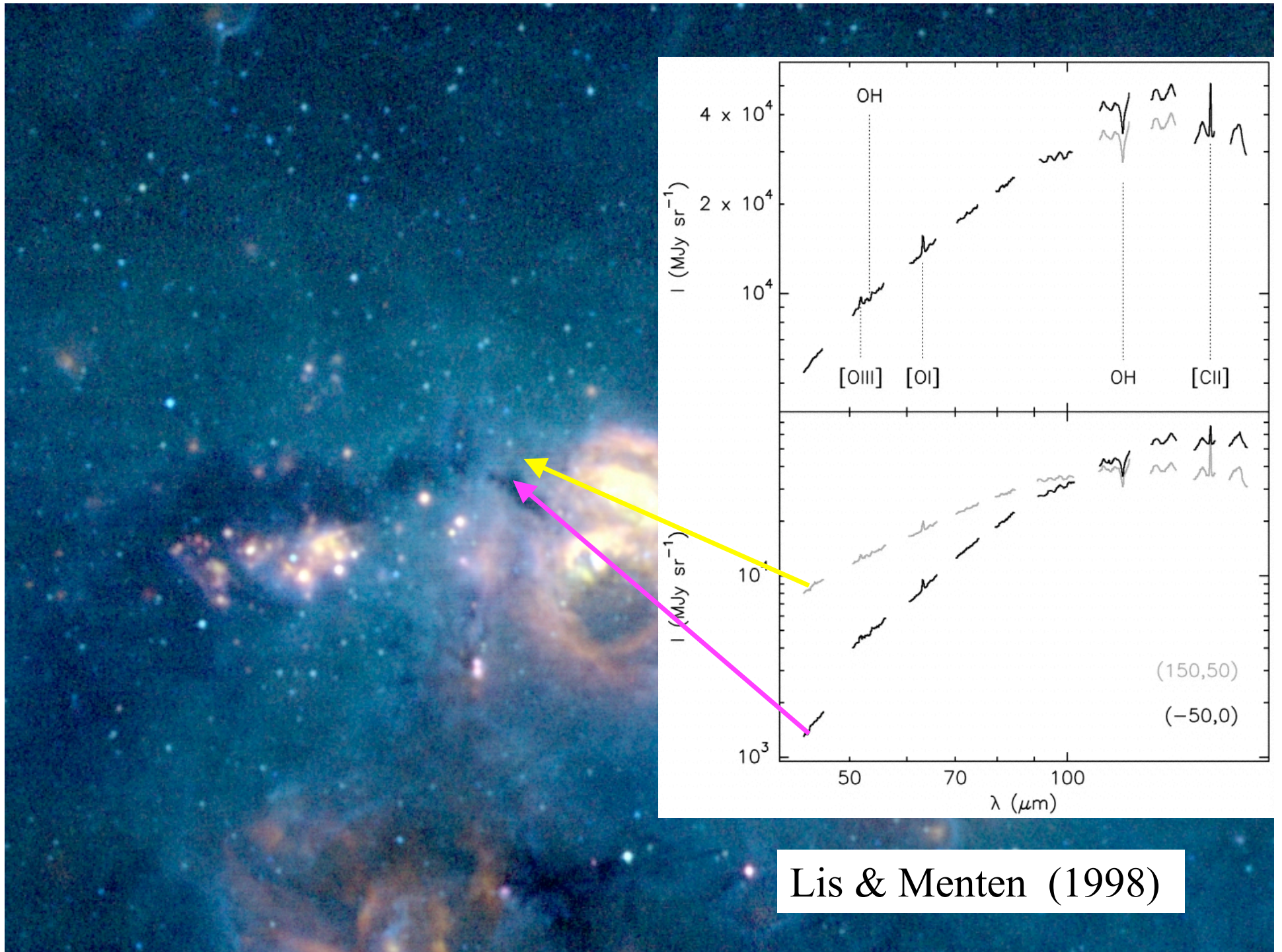




**Spitzer Measurements
of Mid-infrared Extinction in
Infrared-dark Clouds (IRDCs)**

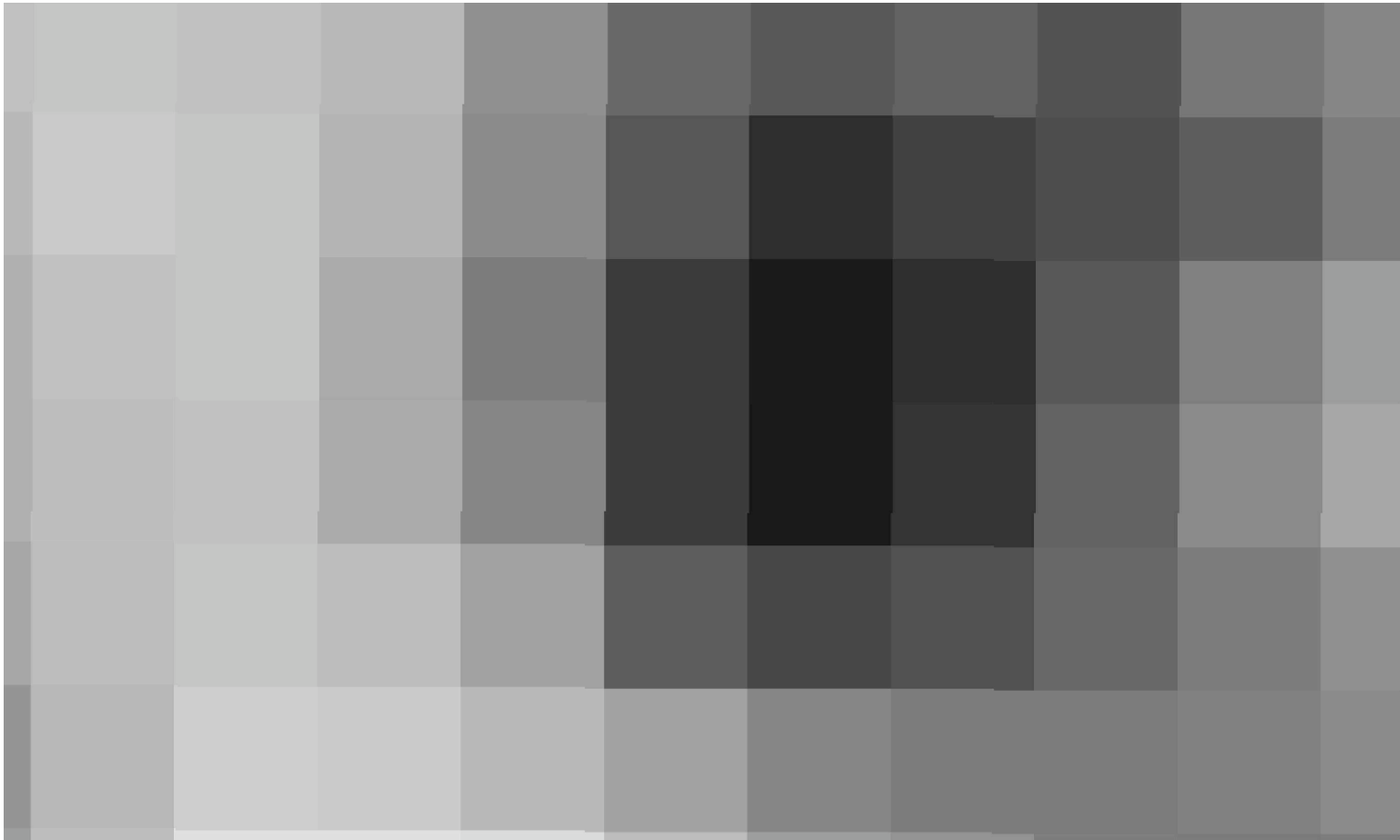
**Sean J. Carey (SSC), Russell Redman (HIA/NRC),
Kathleen Kraemer (AFRL), Lori Allen, Joe Hora (CfA),
Tom Pannuti (SSC)**



Lis & Menten (1998)



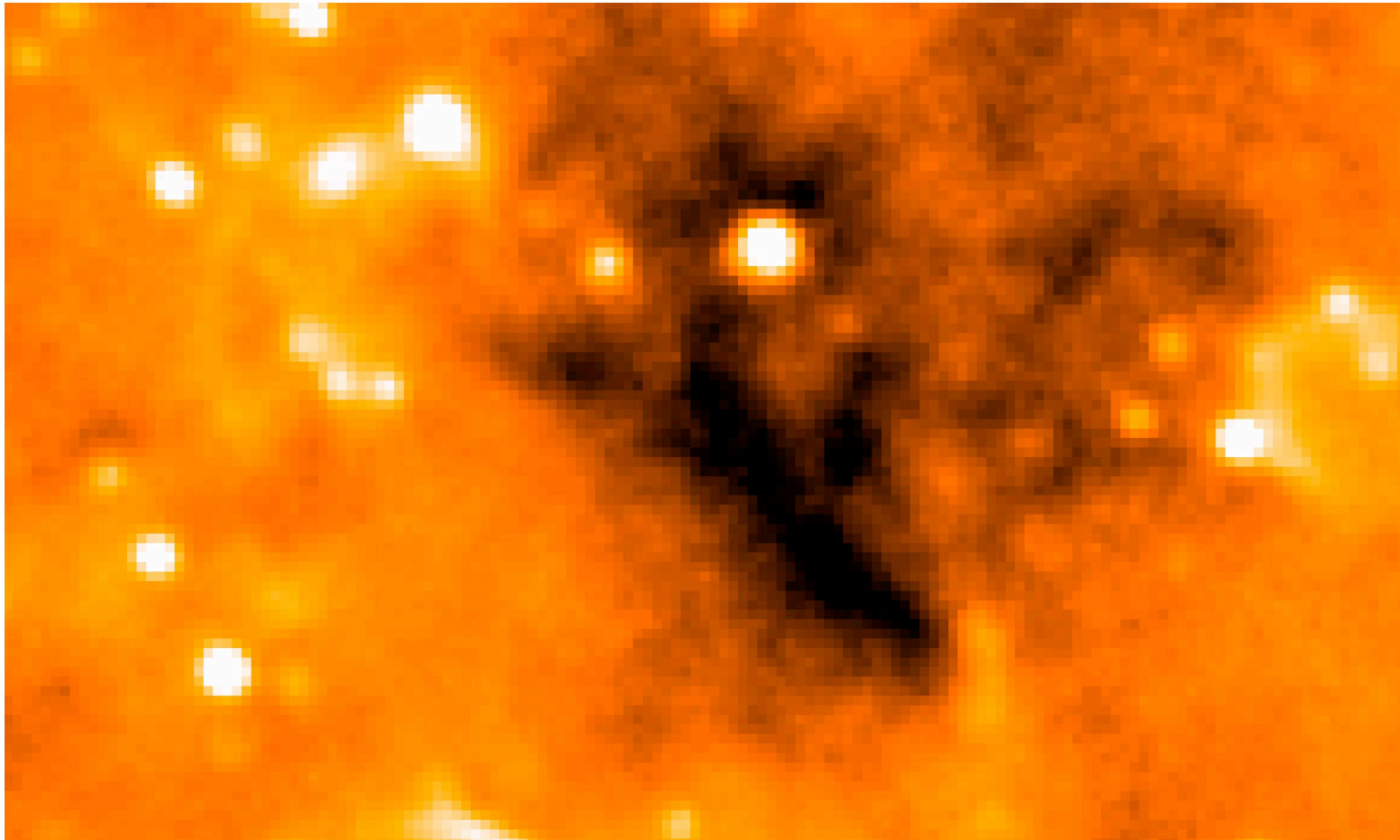
IRDC History



IRAS 12 μm image of G28.34-0.06
4.5 arcmin resolution (ISSA)



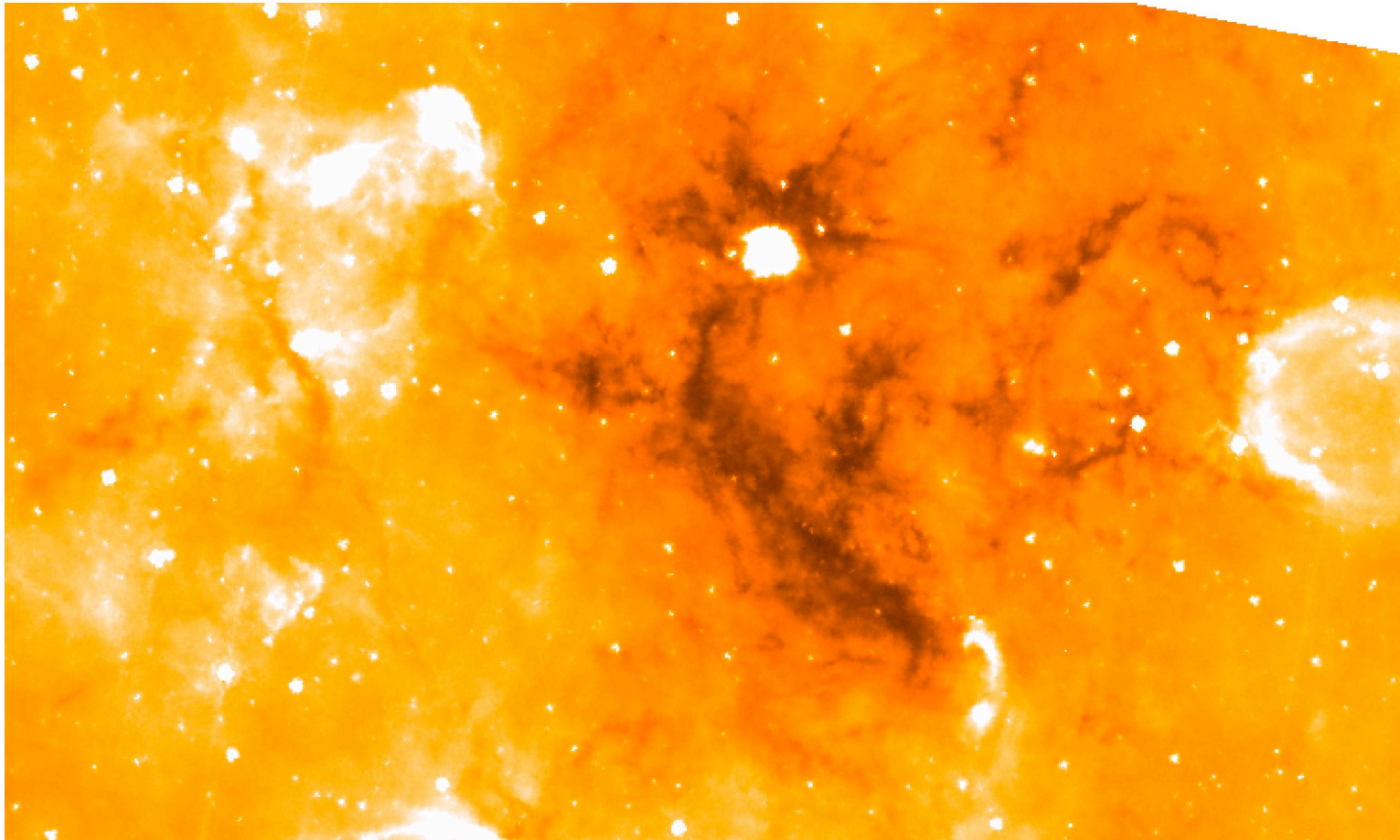
IRDC History



MSX 8 μm image of G28.34-0.06
20 arcsec resolution



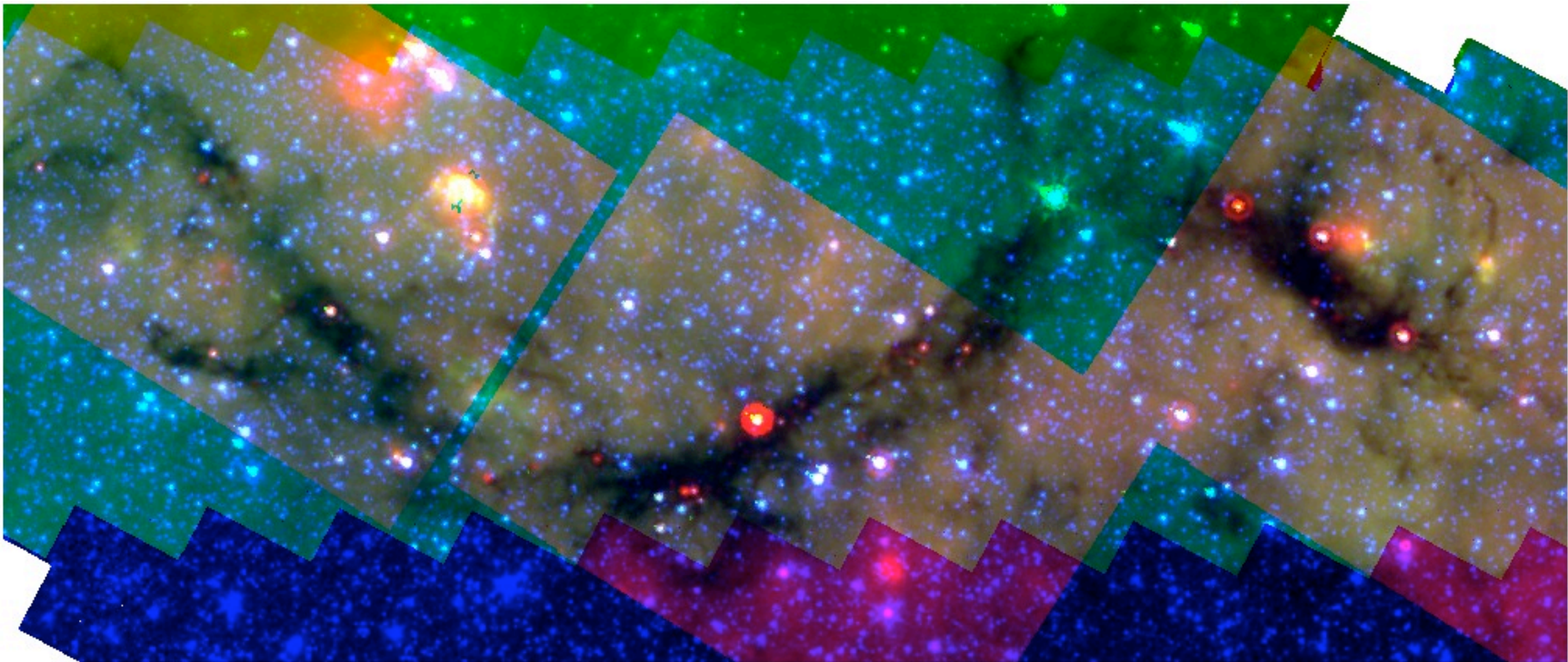
IRDC History



IRAC 8.0 μm of G28.34-0.06
Resolution ~ 2 arcsec

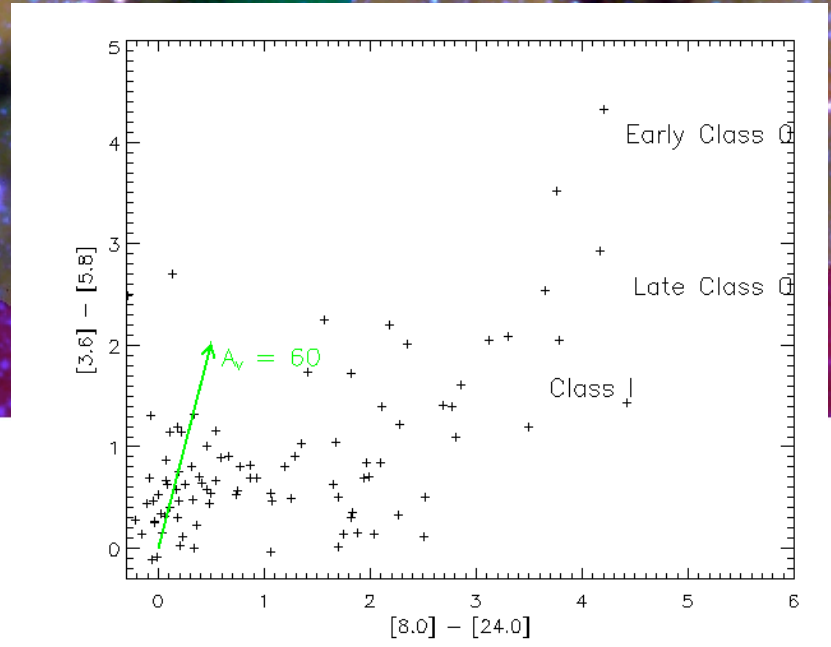
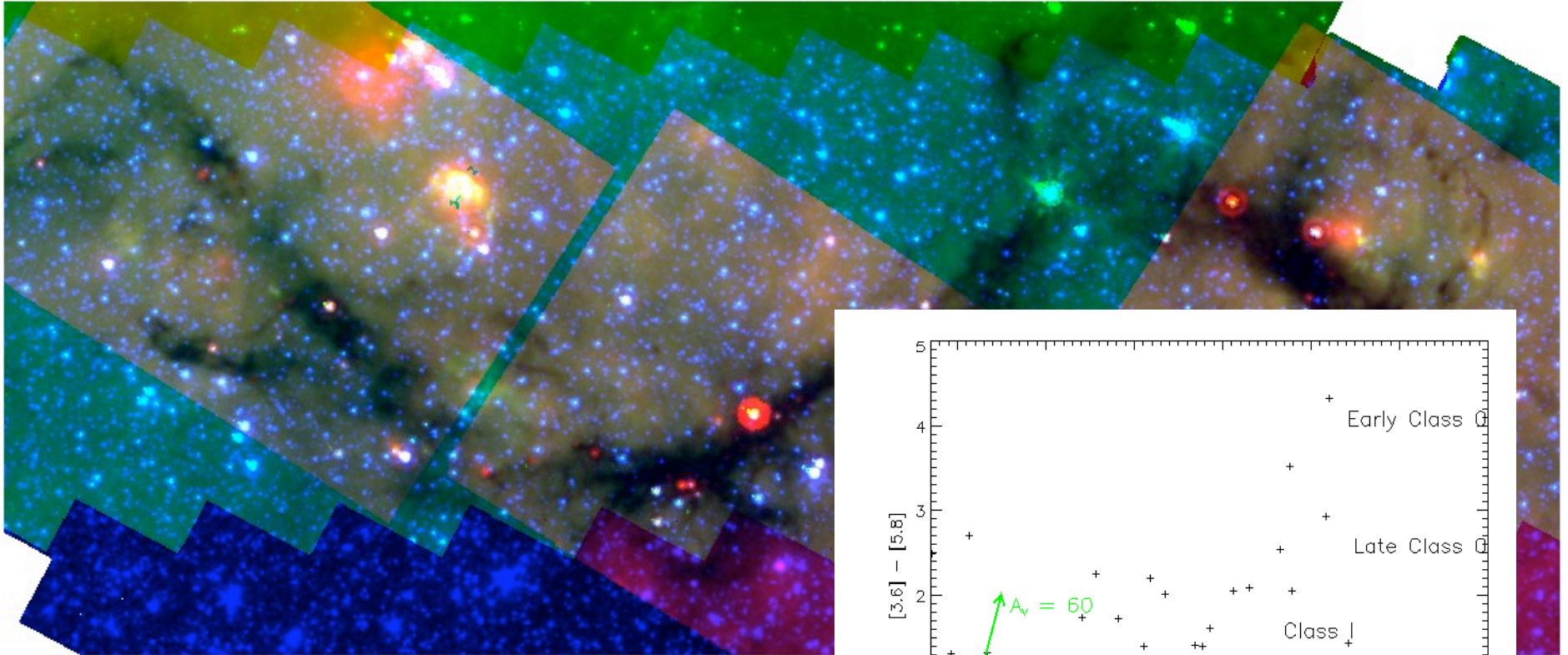


G11.11-0.11



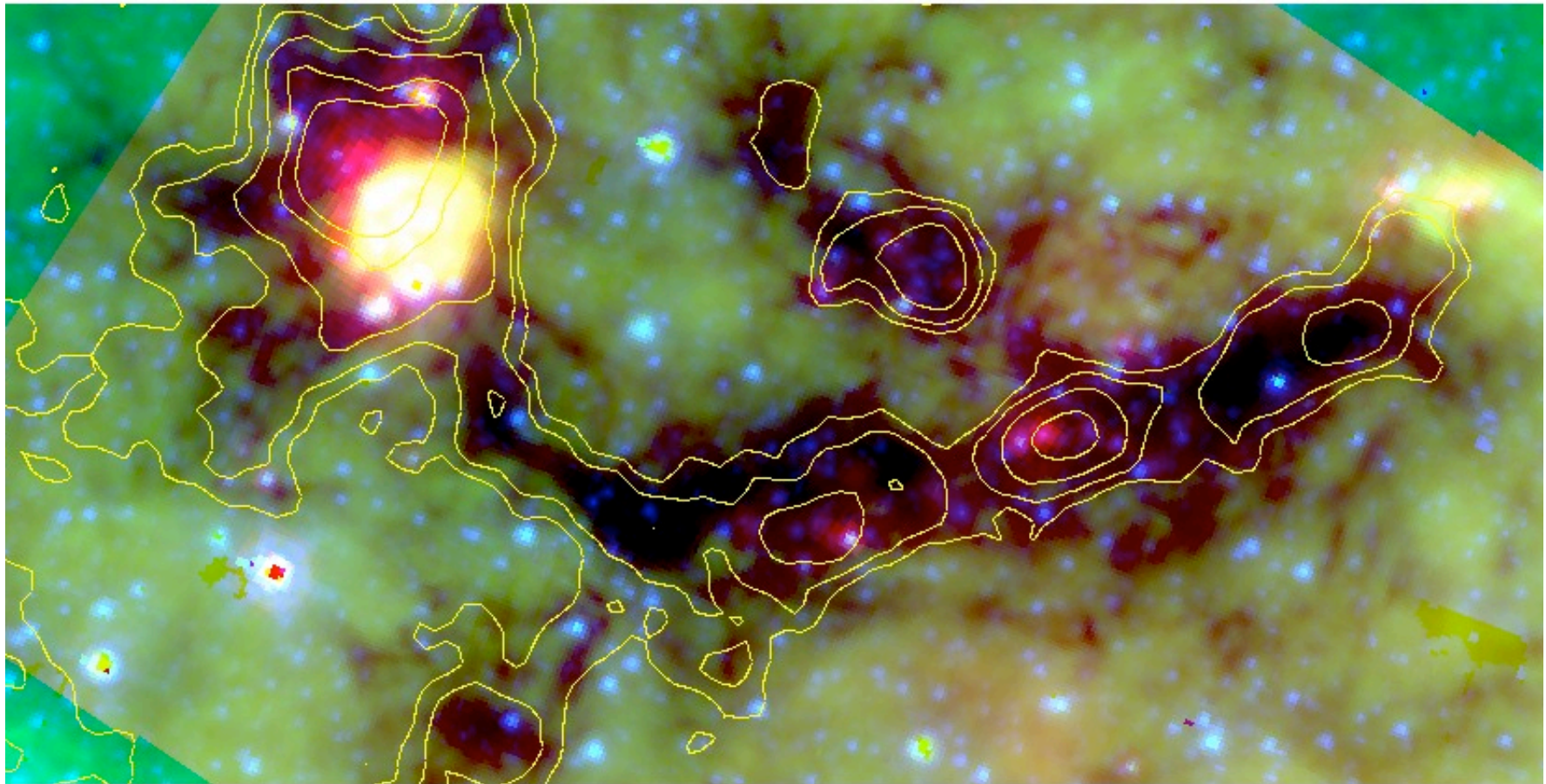


G11.11-0.11





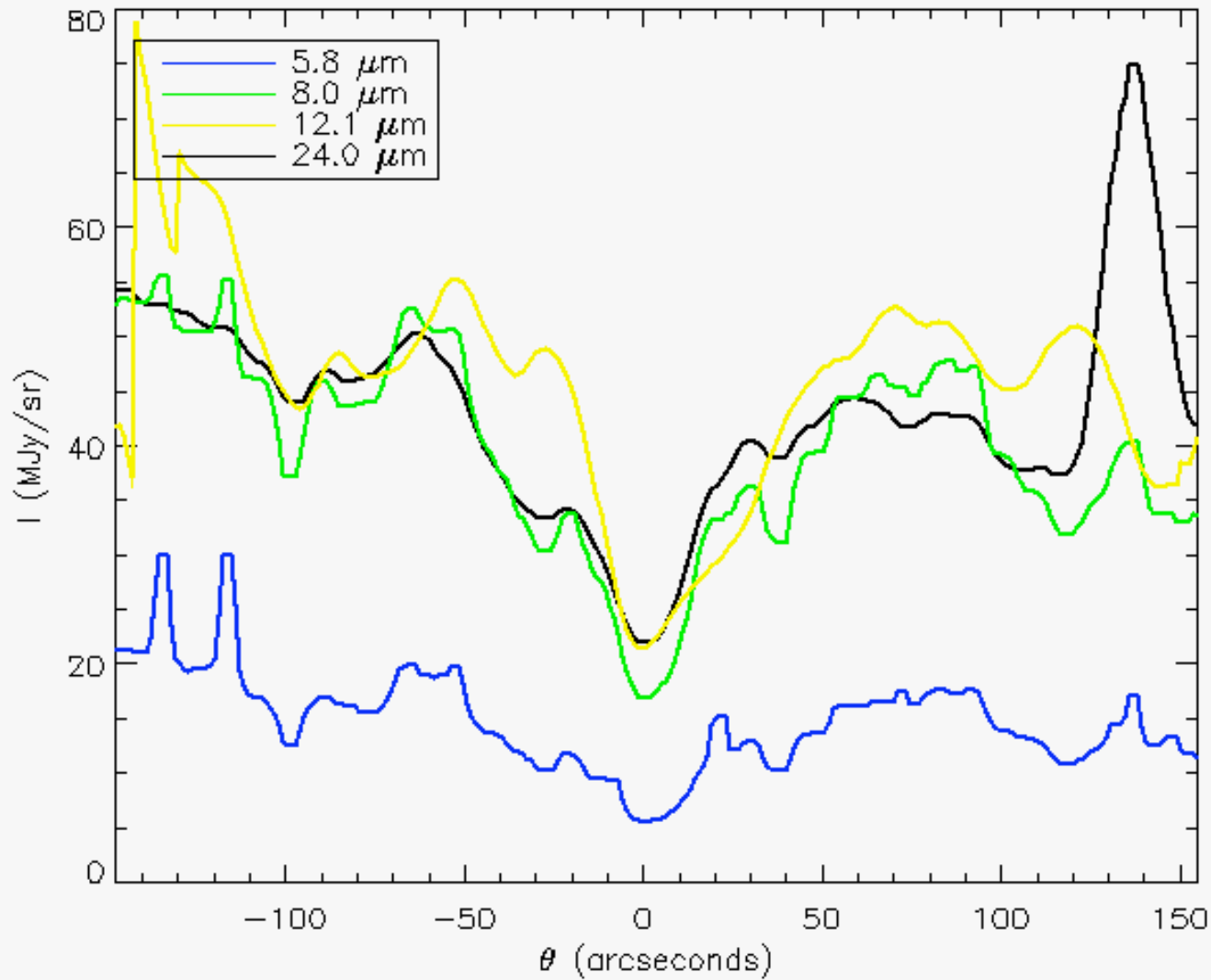
G28.34+0.06



Blue: IRAC 4.5 μm , Green: IRAC 8.0 μm , Red: MIPS 24 μm
Contours: 850 μm

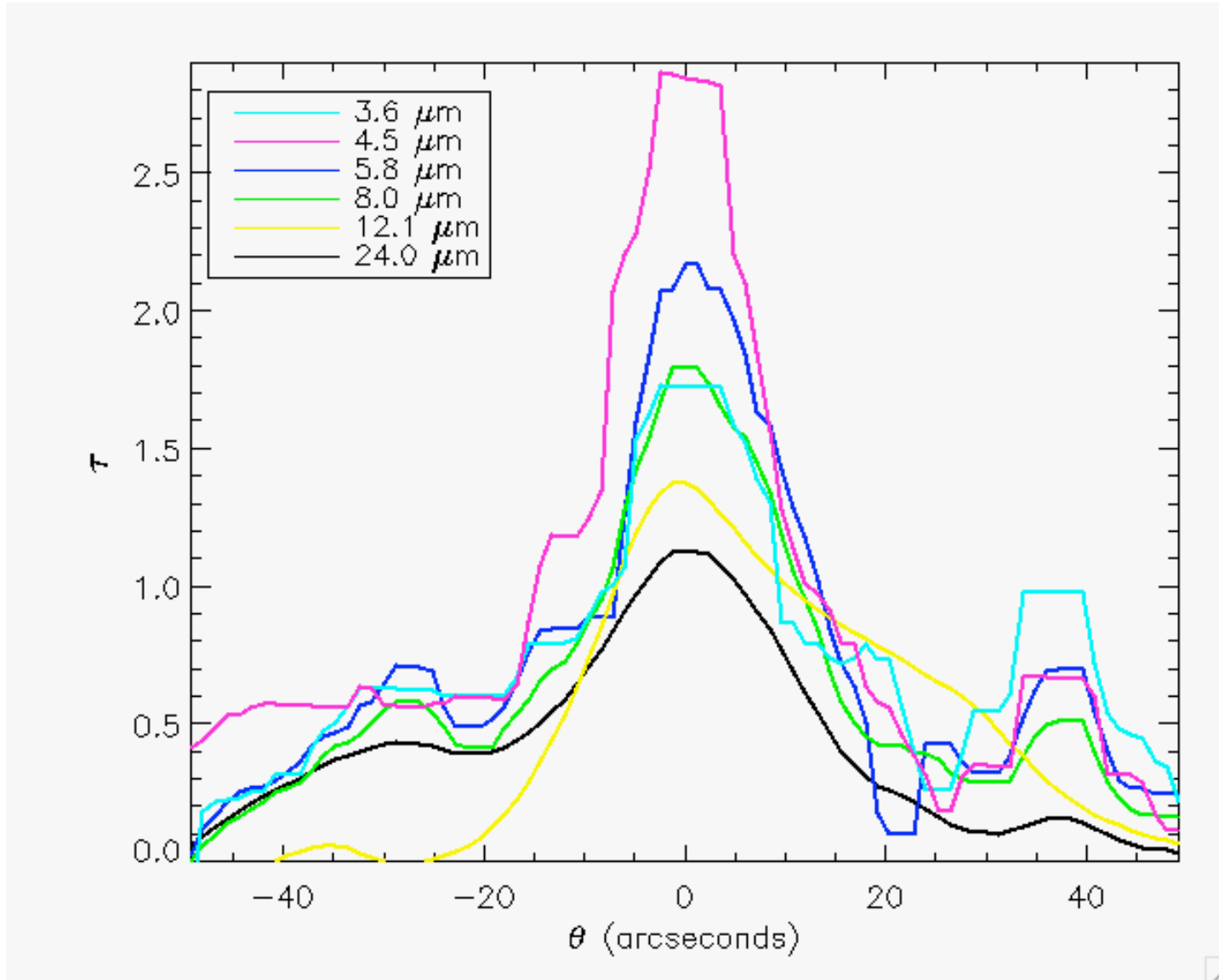


Mid-Infrared Extinction Slices G28.34



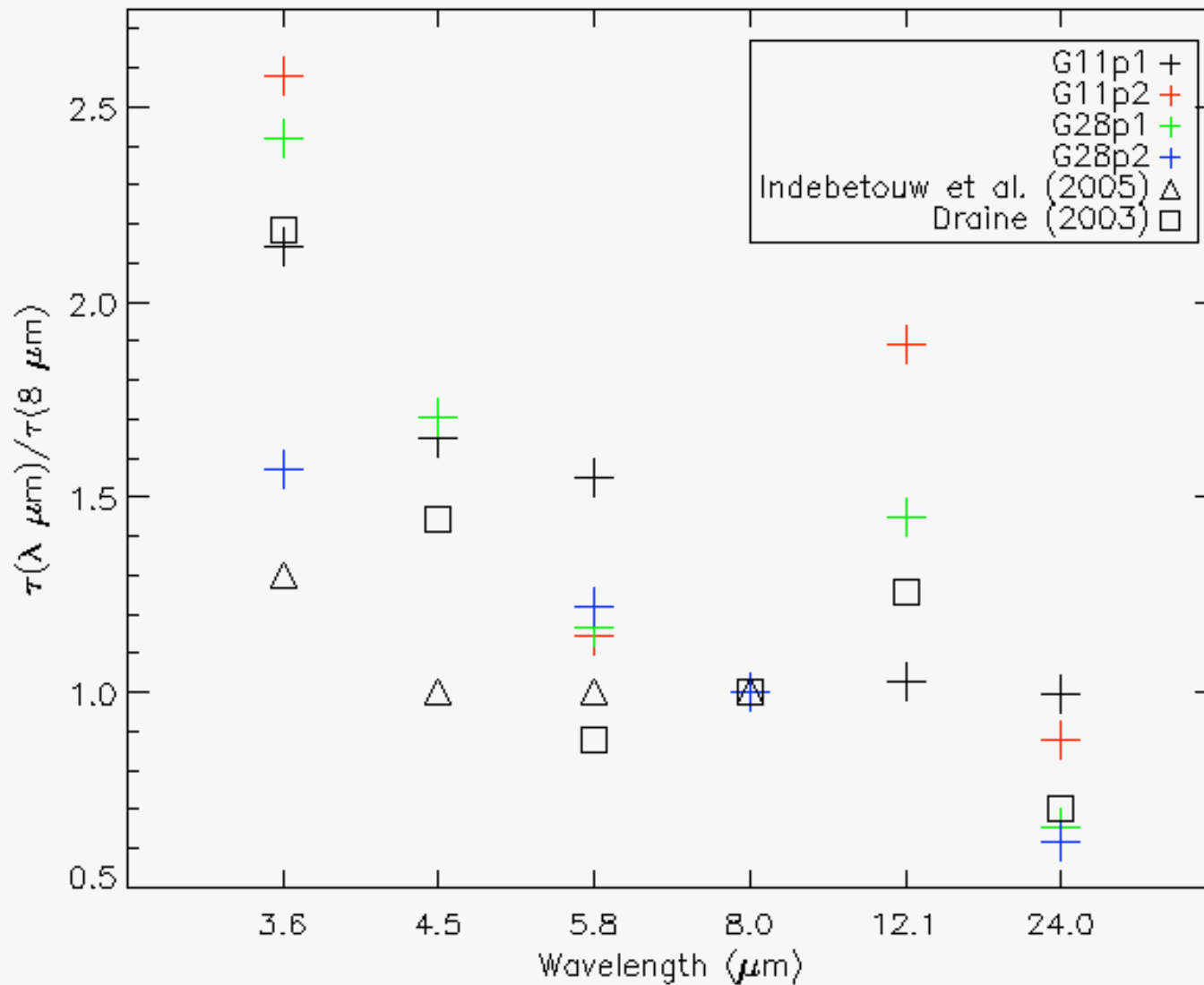


Mid-Infrared Extinction



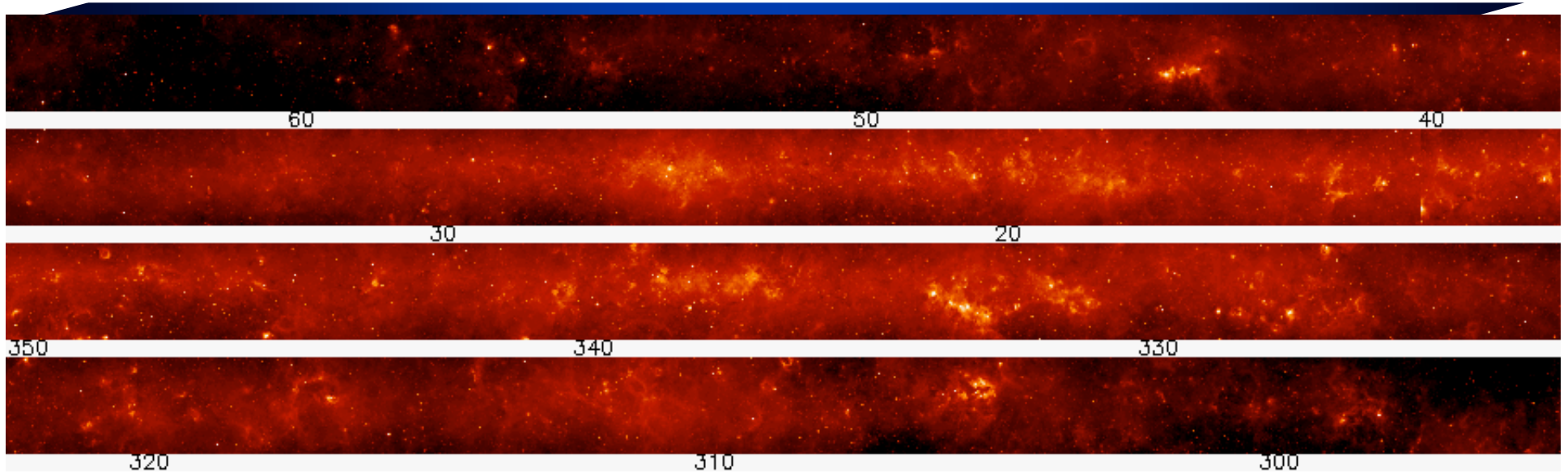


Mid-IR Extinction Law





MIPSGAL Survey



- + MIPS 24 and 70 μm survey of inner GALactic plane
 - _ $|b| < 1.0^\circ$
 - _ $10^\circ < l < 63^\circ$ and $302^\circ < l < 350^\circ$
- + Expect ~70% of survey region at 70 μm
- + Point source sensitivities 1.3 and 51 mJy at 24 and 70 μm
- + Data publicly available immediately
 - _ *1st quadrant observations - September 2005*
 - _ *4th quadrant observations - April 2006*
- + Enhanced Data products (mosaics, source catalog, source subtracted mosaics)