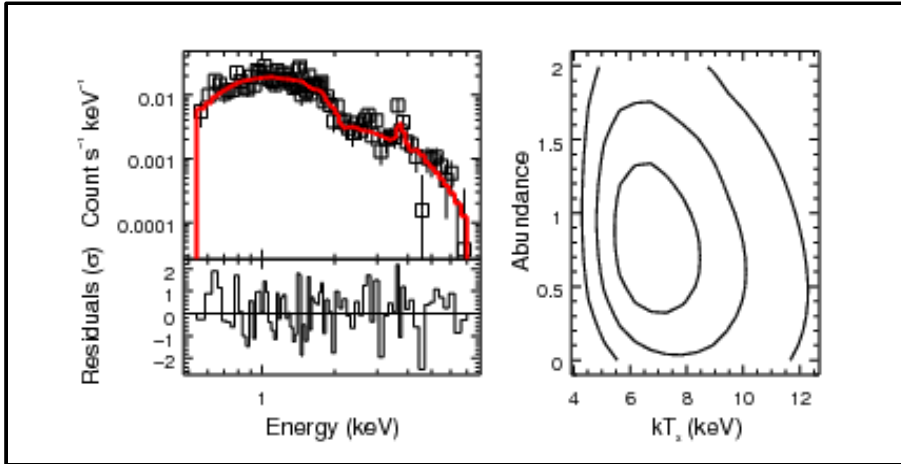


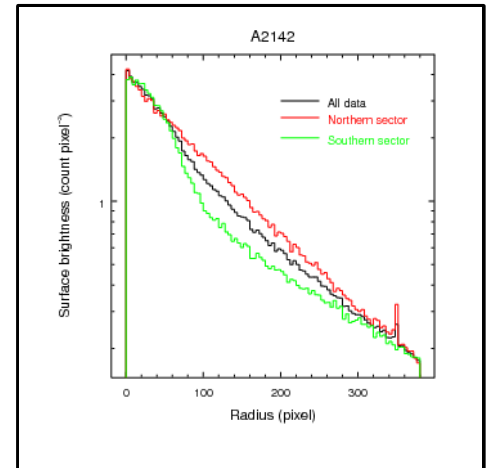
# ChIPS

The Chandra Plotting Package

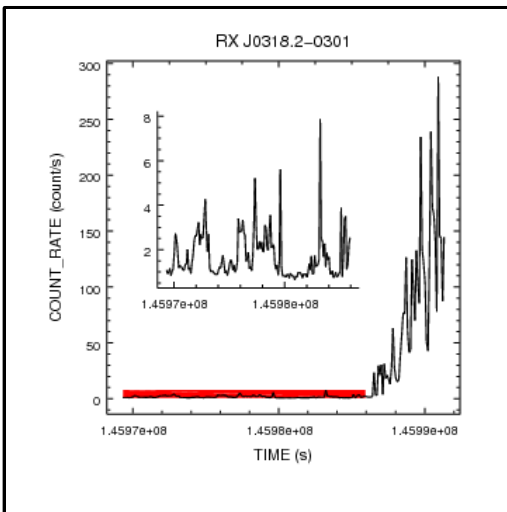
ChIPS is a powerful plotting package which can be integrated into data analysis or used independently to create publication-quality figures. It offers fine control over the figure display: setting colors, font styles, and line types, adding labels, repositioning objects.



Data and residuals in left frame, contours in right frame.



Multiple histograms.



Placing one plot within another plot.

- redo and undo commands to step forward and backward
- platform-independent state file to restore plot from save
- CMYK support for PS and EPS output formats
- user interfaces: interactive command line and batch processing
- importable module for scripting in Python or S-Lang

In CIAO 4, the ChIPS syntax has changed to allow new scripting capabilities. Submit your old save files or scripts to [cxchelp@cfa.harvard.edu](mailto:cxchelp@cfa.harvard.edu) and we will update them for you.

Meet the  
ChIPS  
Team



Robert Milaszewski, Warren McLaughlin,  
Gregg Germain, and Joe Miller



Doug Burke



Ian Evans

<http://cxc.harvard.edu/chips/>