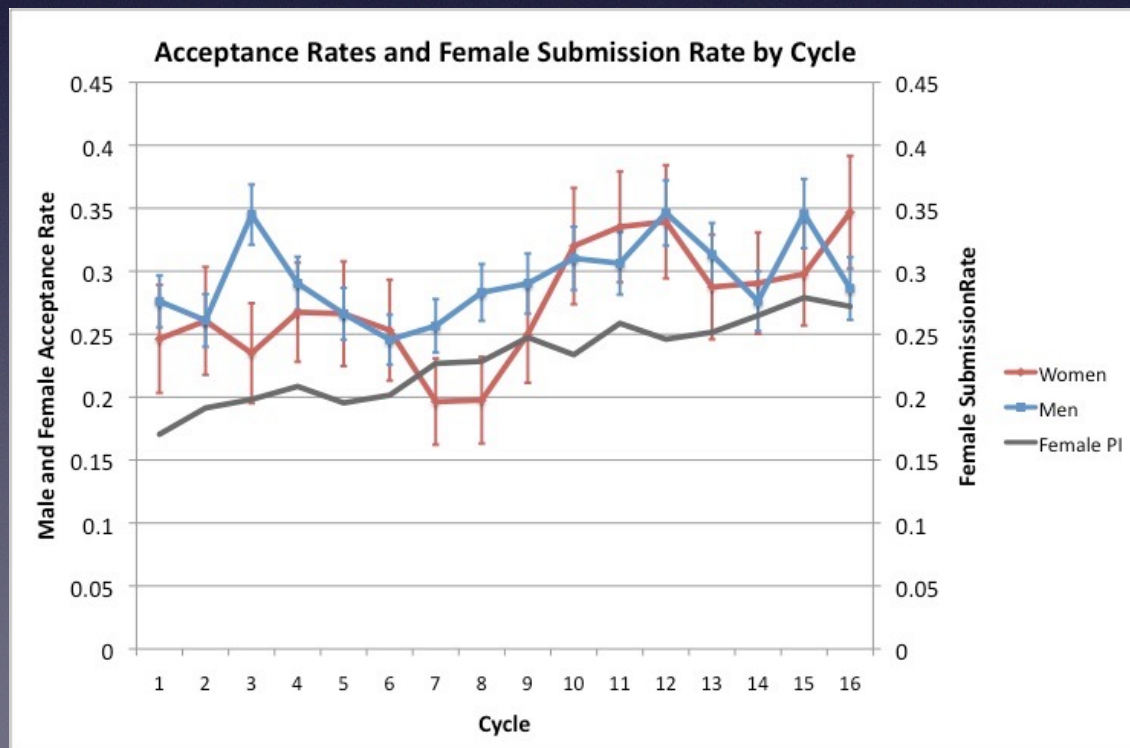
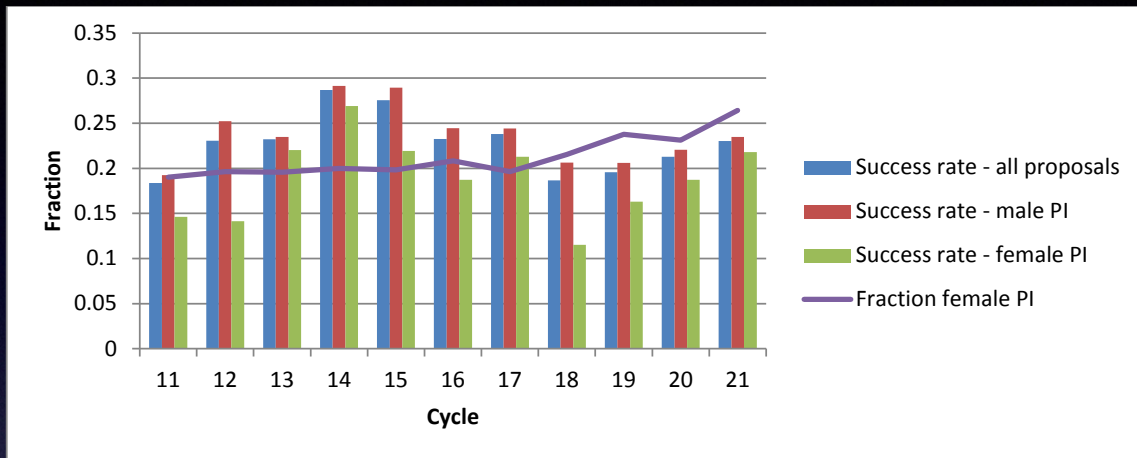


Chandra Proposal Statistics



- HST study showed male acceptance rate higher than female acceptance rate. Not always significant in any given cycle, but trend is highly significant.
- Attributed to “unconscious bias”.
- Chandra male/female acceptance rates equitable since ~Cycle 10.
- Coincides with fraction female PIs > ~ 25%
- Working hypothesis: need to reach threshold of ~25% female PIs so that females lose “minority status”.
- Working with other NASA facilities to understand gender bias.